



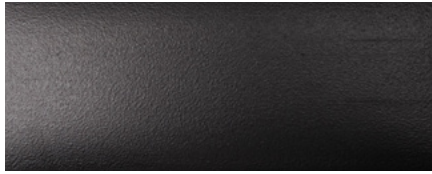
Finishes & Textures

3.1

Standard Textures



CN Crystal No Top Coat



Smooth



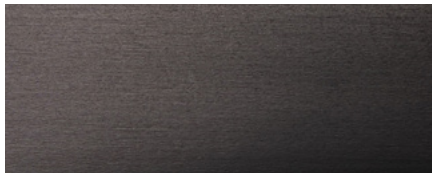
T Texture



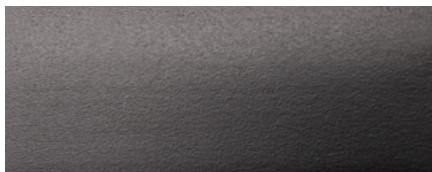
X-5



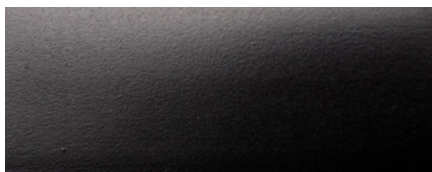
L



M



R



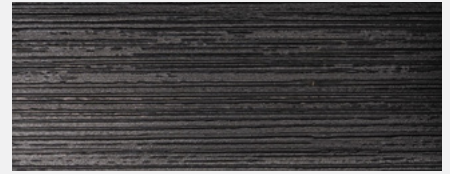
H

Standard Gloss Finishes

Premium



A Ashwood



V Cascade



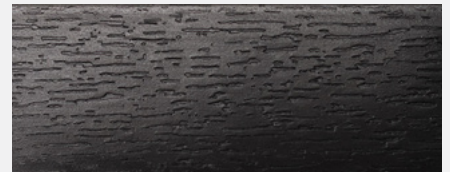
F Medina



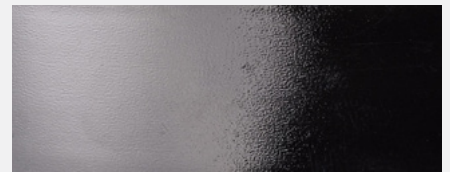
J Wood Tick



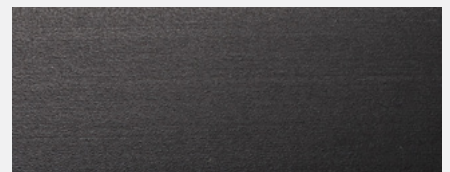
B Brush



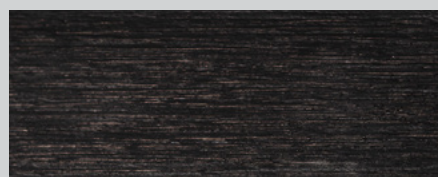
K Maple Tick



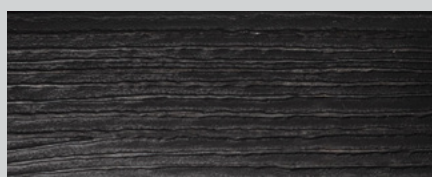
G High Gloss



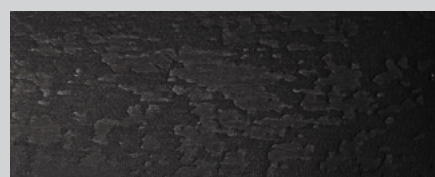
X-Z TekMatte Ultra



P Aged Bark



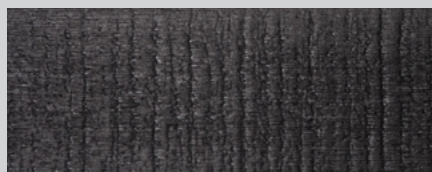
I Barnboard



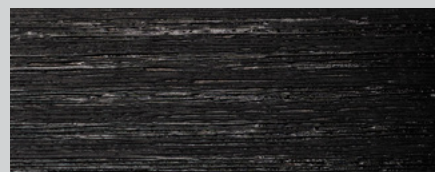
Q Stone



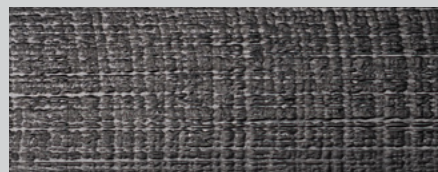
Y Quarry



D Sawcut



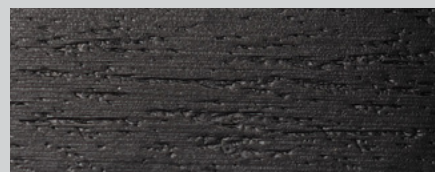
BL Soft Touch



O Linen



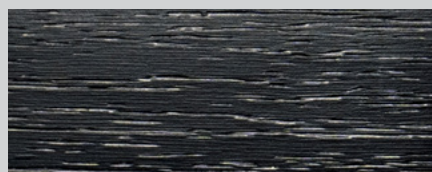
FK Timberline



U Vintage



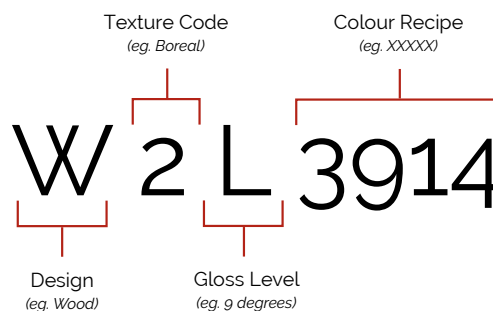
2 Boreal



3 Brava

Samples in this catalog are using either low, medium or high gloss to show you some of the best contrast for each texture item.

How to Read Teknaform Codes

1st Letter2nd Letter3rd Letter

1st Letter in code	Design	Design (eg. Wood)	Gloss Level (eg. 9 degrees)
S	Solids		
W	Woodgrains		
P	Patterns		
2nd Letter in code	Teknaform Texture Name	Alternate Names	Texture Category
T	Textured		Standard
C	Crystal	Mandarin, Sparkle, Softex, Crystalite	Standard
*	Smooth	Select the gloss level desired from the list below*	Standard or Premium
A	Ashwood	Algonquin Ash, 07, Mezzo Cherry	Premium
K	M-Tick	Nutshell, Fine Grain	Premium
J	W-Tick	AuthenTick, Evergrain, Tick, Wood-essence, Linea, Open grain, Urbania, Bistro, SoftGrain	Premium
B	Brush	Satinata, Metalux, 09 Brushed, Chrysalis, Root	Premium
G	Smooth	High Gloss	Premium
V	Cascade	Rain	Premium
F	Medina	Grainwood, Microline, Structured, 37, FR, RW, Artika, Alto, Rio, Woodline	Premium
P	Aged Bark	Veneer, Walnut Pittoni	Ultra Premium
I	Barnboard	Sequoia	Ultra Premium
Y	Quarry		Ultra Premium
D	Sawcut		Ultra Premium
Q	Stone	46 Etchings, Mirage, Facet	Ultra Premium
U	Vintage	Atlas, Karisma	Ultra Premium
BL	Soft Touch		Ultra Premium
FK	Timberline		Ultra Premium
2	Boreal	Mystery, Grove	Ultra Premium
3	Brava	Feria	Ultra Premium
O	Linen	Crisscross, Calico	Ultra Premium
3rd Letter in code	Gloss Level	Alternate Names	Finish Category
X-Z	TekMatte Ultra	New -Premium 3 degree gloss level available in 1mm and thicker	Premium
X-5	Matte	5 degree gloss for .018 material- Velvet, Super Matte look	Standard
L	Gloss 9 +/- 3	Low Gloss, Matte, Vellum	Standard
M	Gloss 14 +/-3	Medium Gloss, Classic	Standard
R	Gloss 18 +/- 3	Denim, Egg Shell	Standard
H	Gloss 24 +/- 3	Satin Sheen	Standard
X	Gloss- #	Custom Gloss level	Standard
G	Gloss 80	High Gloss	Premium





Manufacturer

Teknaform™ • 180 Parr Blvd. Bolton, Ontario L7E 4E6 • T: 905-857-6747 F: 905-857-2602

Product Description

Thermoplastic PVC (Polyvinyl Chloride Plastic) Edgebanding is manufactured through an extrusion process into many different thicknesses and widths. Further, it is coloured and/or printed to match virtually any solid colour, woodgrain or pattern.

Primer

The back side of the PVC Edgebanding is treated with a primer which is an integral part of establishing a successful bond with the adhesive.

Colour

Colour evaluation (particularly with prints) is somewhat subjective. All efforts are made to provide the best possible match to the specified product. Please note that slight colour variations from run to run are normal. Colour matches are developed/approved using D65 (daylight) light source, unless otherwise specified.

Gloss

Gloss is measured using a 60° angle gloss meter. Specs are kept to a tolerance of ± 3 . Note that gloss level of textured products cannot be measured with an instrument but rather are evaluated visually.

Top Coat Cure

The Top Coat will withstand 20 rubs of M.E.K. without any significant effect to the print.

Straightness

RIGID	Maximum 1/4" curve over 4 feet
FLEXIBLE	Maximum 1" curve over 4 feet

Width Tolerances

Less than 1-5/16" ± 0.015 " 1-5/16" or More ± 0.025 "

Thickness Tolerances

Under 1mm ± 0.002 " 1mm & Over ± 0.1 mm

Note that thickness tolerances do not apply to the outer edges (within 1/16") of the PVC Edgebanding.

Note that with Width and Thickness measurements, it may be that the odd measurement within a roll falls outside of these tolerances due to the normal fluctuations in the extrusion process.

Visit Teknaform.com
to find your perfect match.

